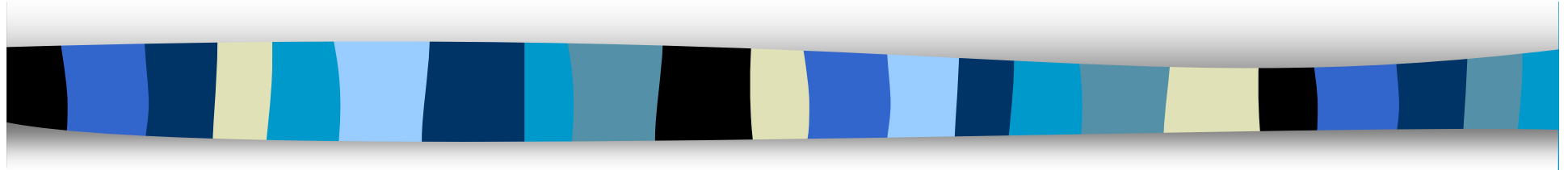
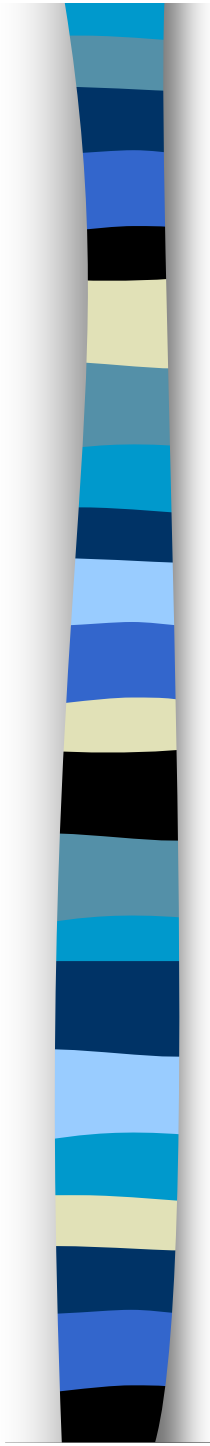


SYSTEMIC PRACTICE & FAMILY BASED INTERVENTIONS

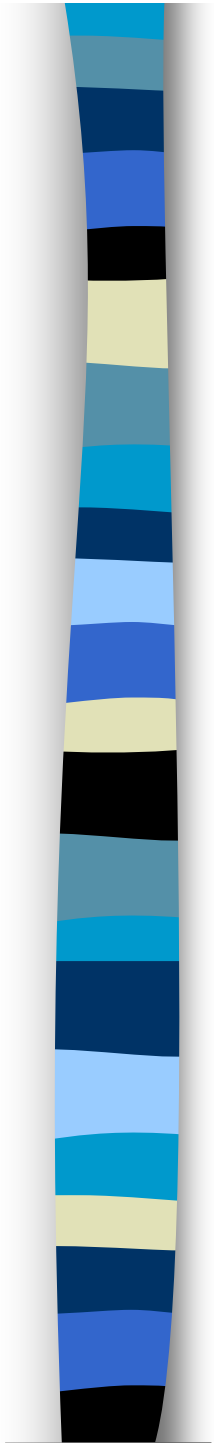


HOLDING THE FAMILY IN MIND

**MARIAN GERRY
FAMILY THERAPIST**

- 
- SYSTEMIC / CONNECTEDNESS
 - PARTNERSHIP/ ENGAGEMENT
 - RESPECTFUL CURIOSITY

SYSTEMS



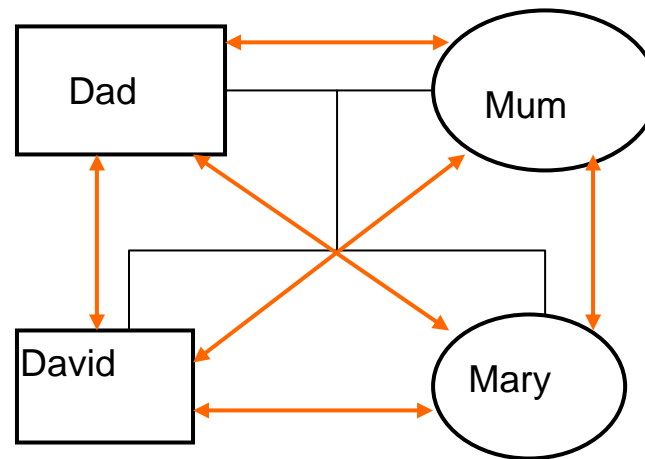
Dad

Mum

David

Mary

SYSTEMS





SYSTEMS THINKING & FAMILIES

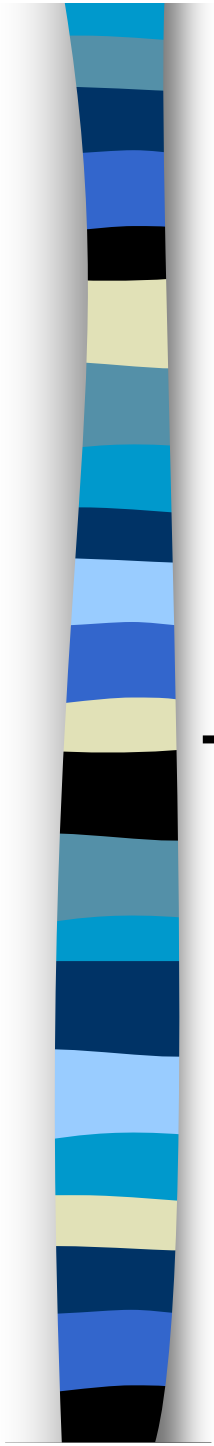
THE PARTS OF THE OF THE FAMILY ARE RELATED TO EACH OTHER

ONE PART OF THE FAMILY CANNOT BE UNDERSTOOD IN ISOLATION FROM THE OTHER PARTS OF IT

FUNCTIONING WITHIN THE FAMILY IS MORE THAN THE SUM OF THE INDIVIDUALS IN IT

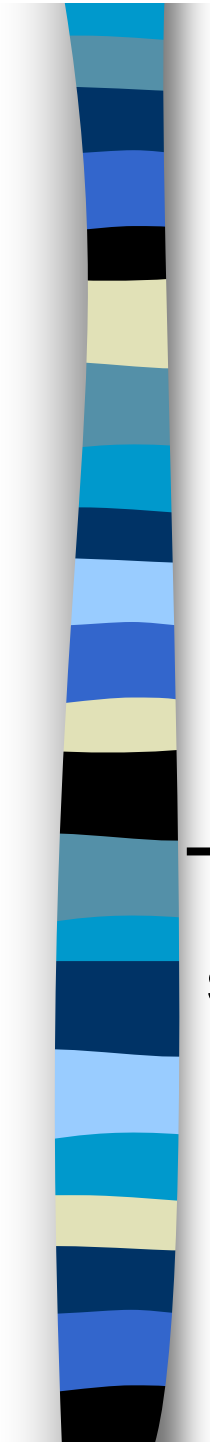
THE OVERT CULTURE, STRUCTURE AND ORGANISATION OF THE FAMILY IS IMPORTANT IN DETERMINING THE BEHAVIOURS OF ITS MEMBERS

BELIEFS (CONCIOUS AND UNCONCIOUS) IN A FAMILY ARE INVOLVED IN SHAPING THE BEHAVIOUR AND RESPONSES OF ITS MEMBERS



school

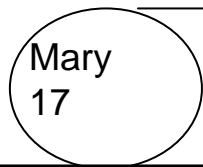
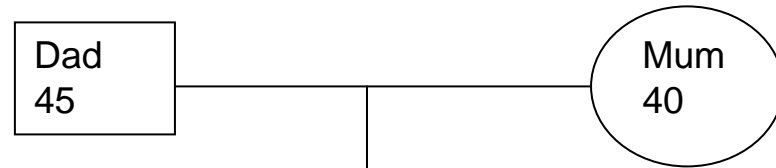
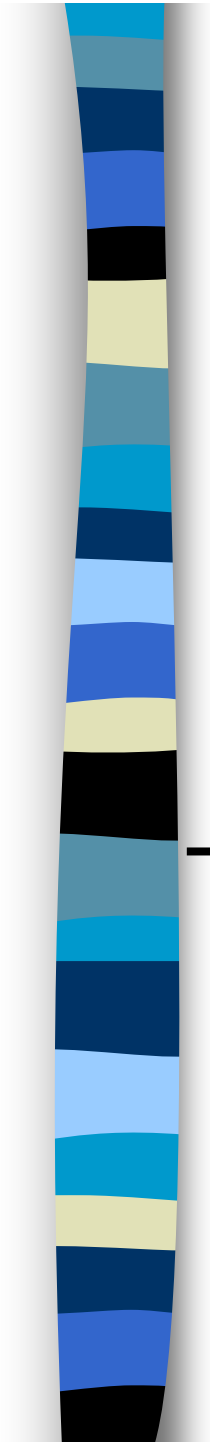
David 15
pupil



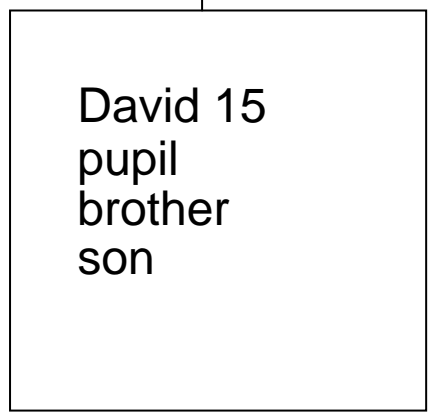
Mary
17

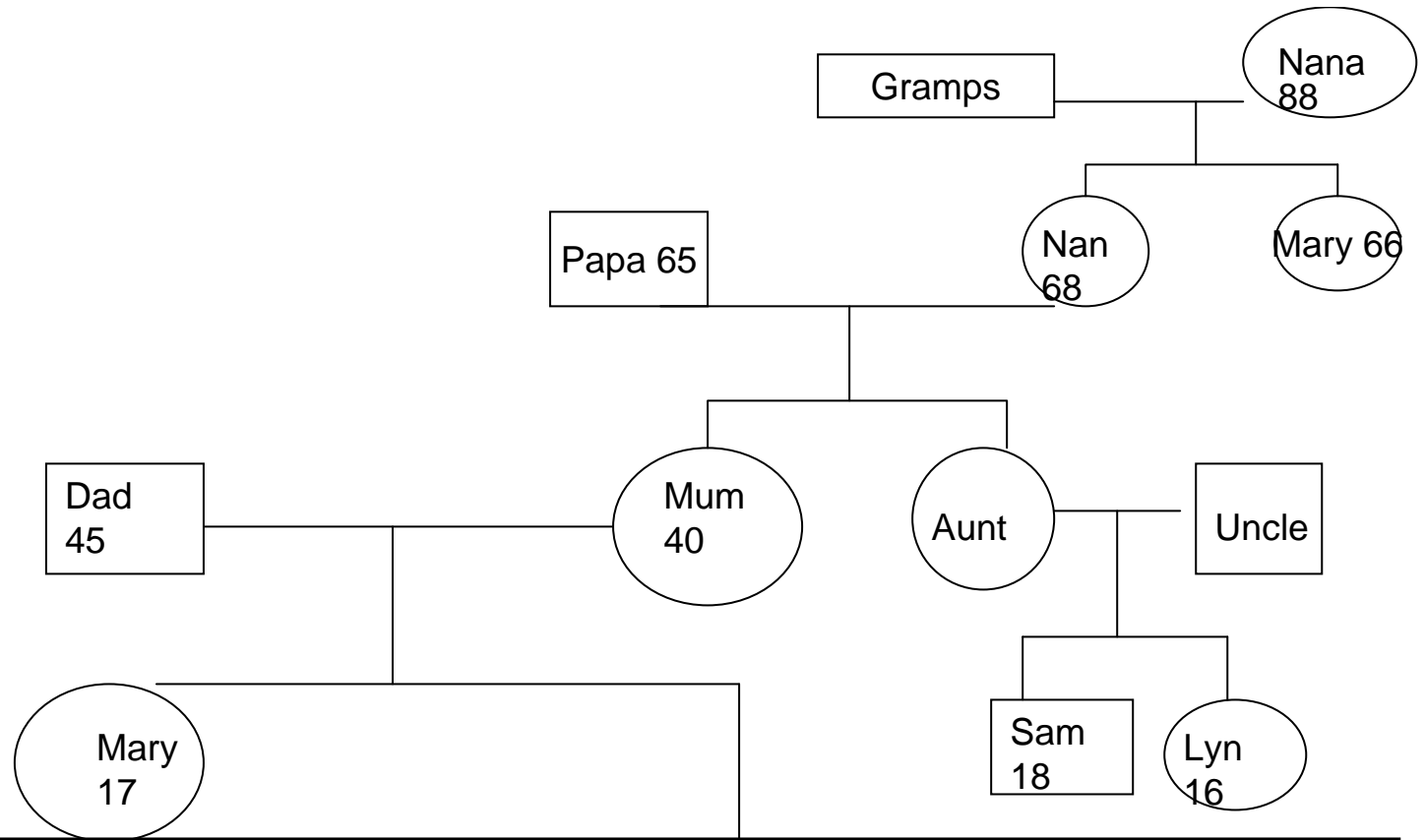
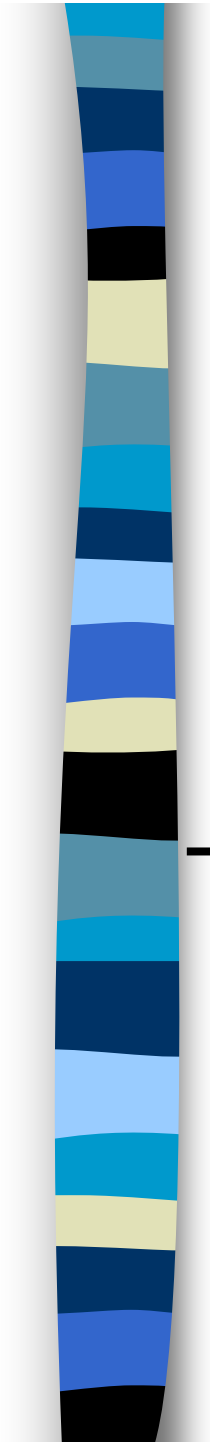
school

David 15
pupil
brother



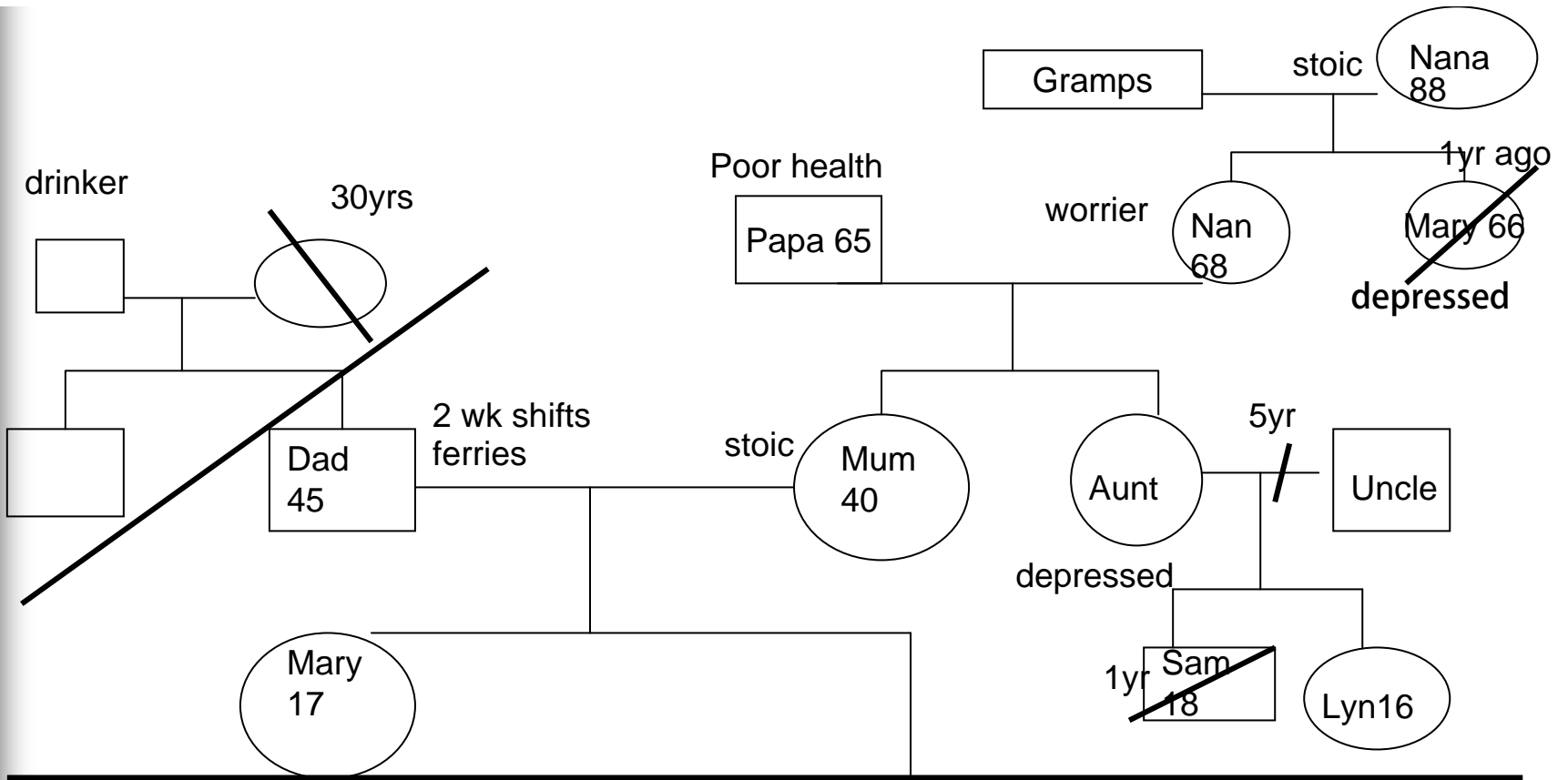
school





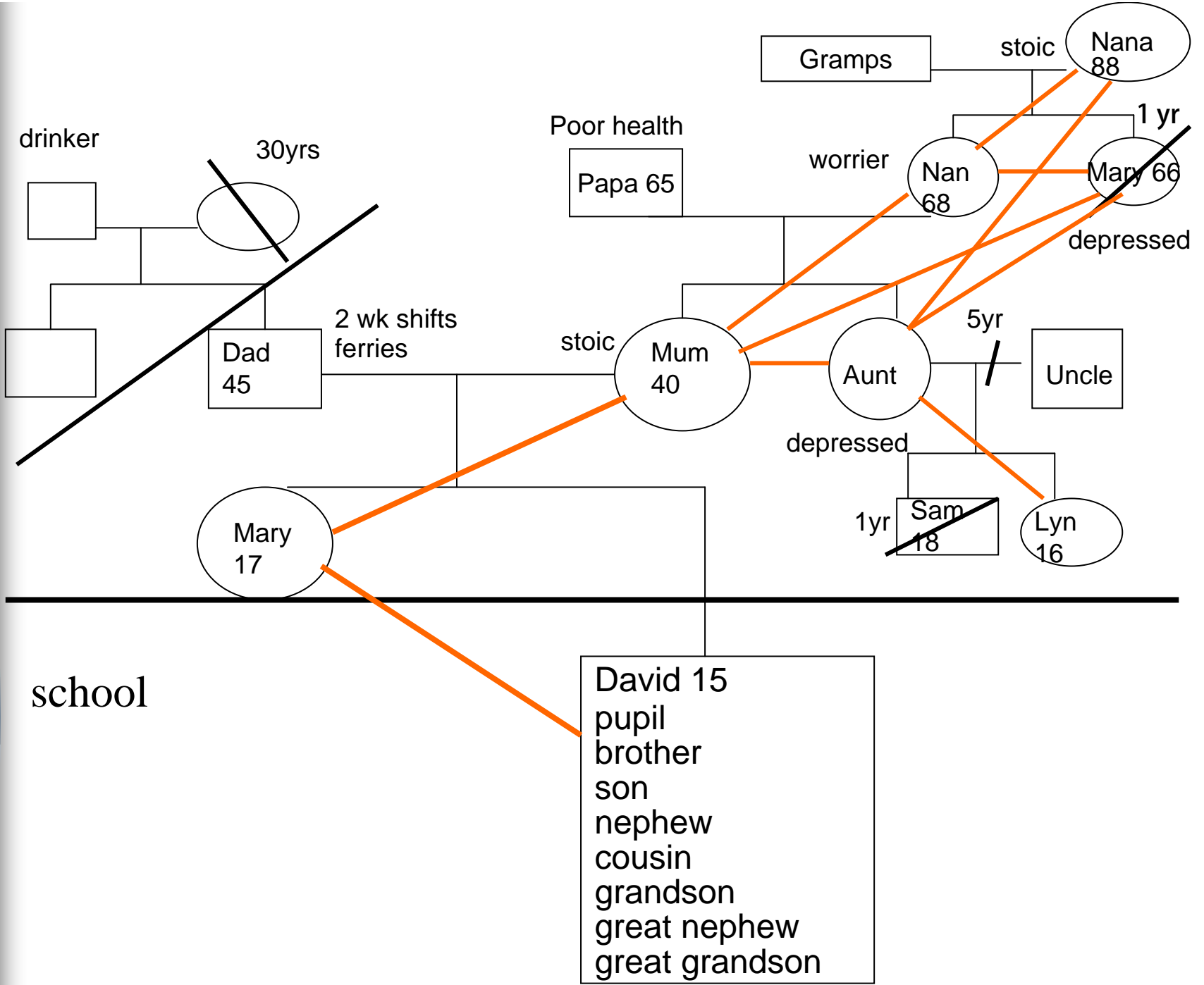
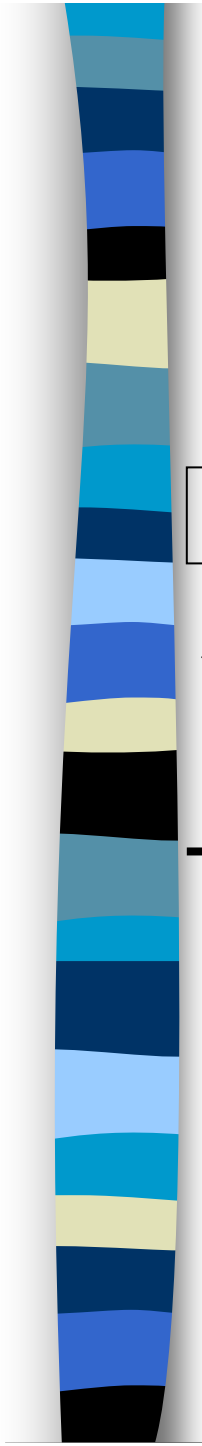
school

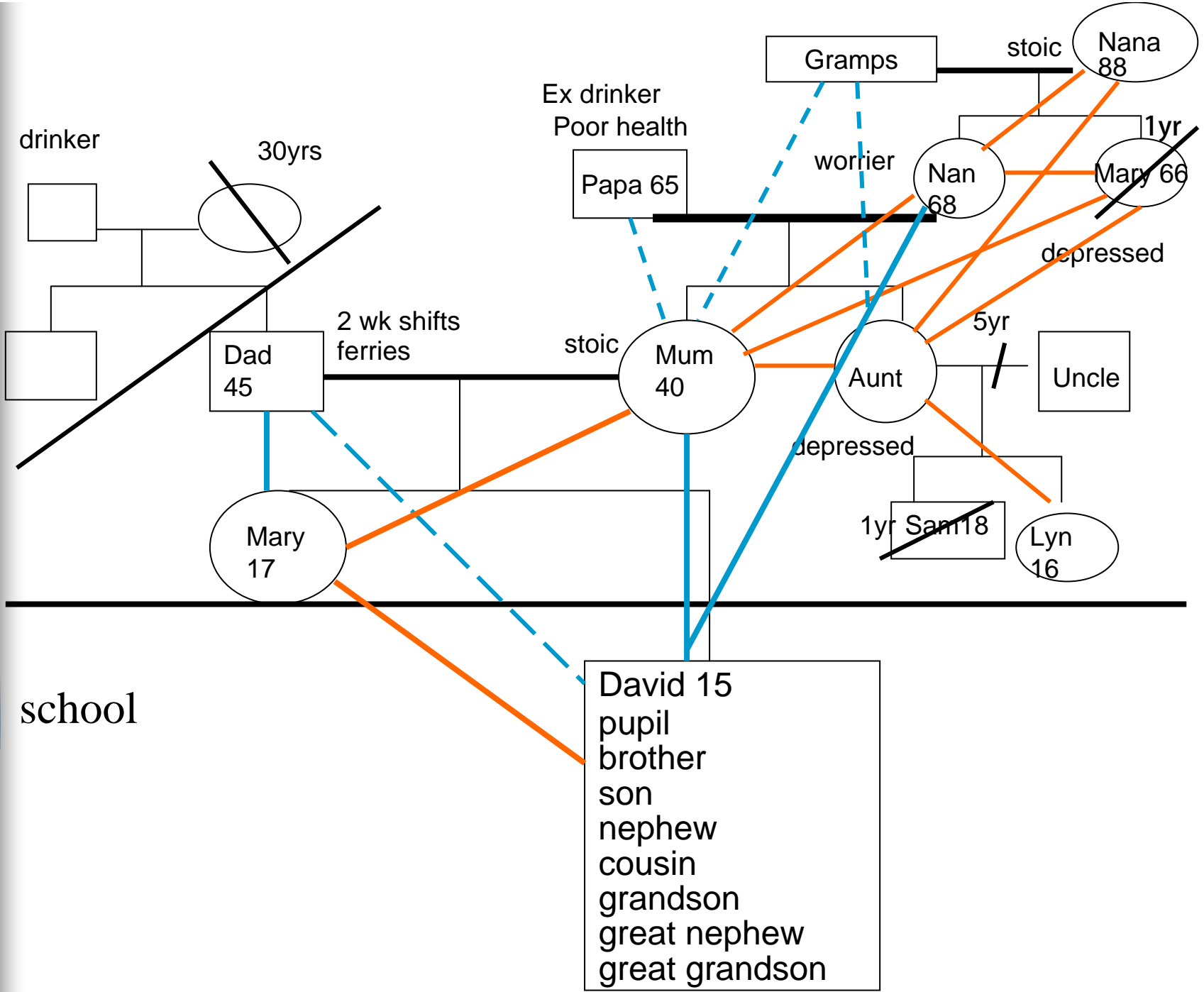
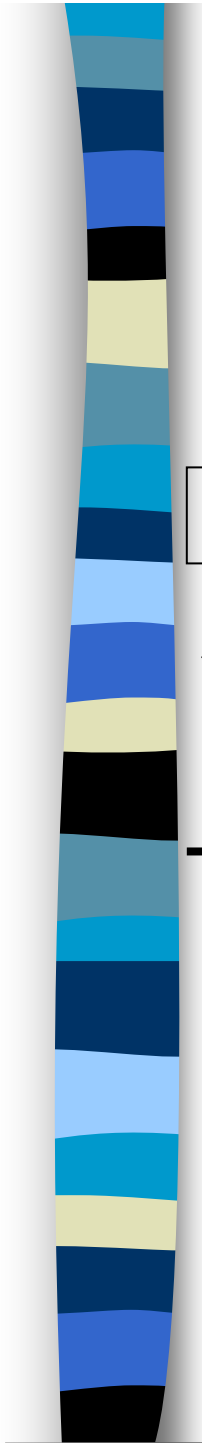
- David 15
- pupil
- brother
- son
- nephew
- cousin
- grandson
- great nephew
- great grandson

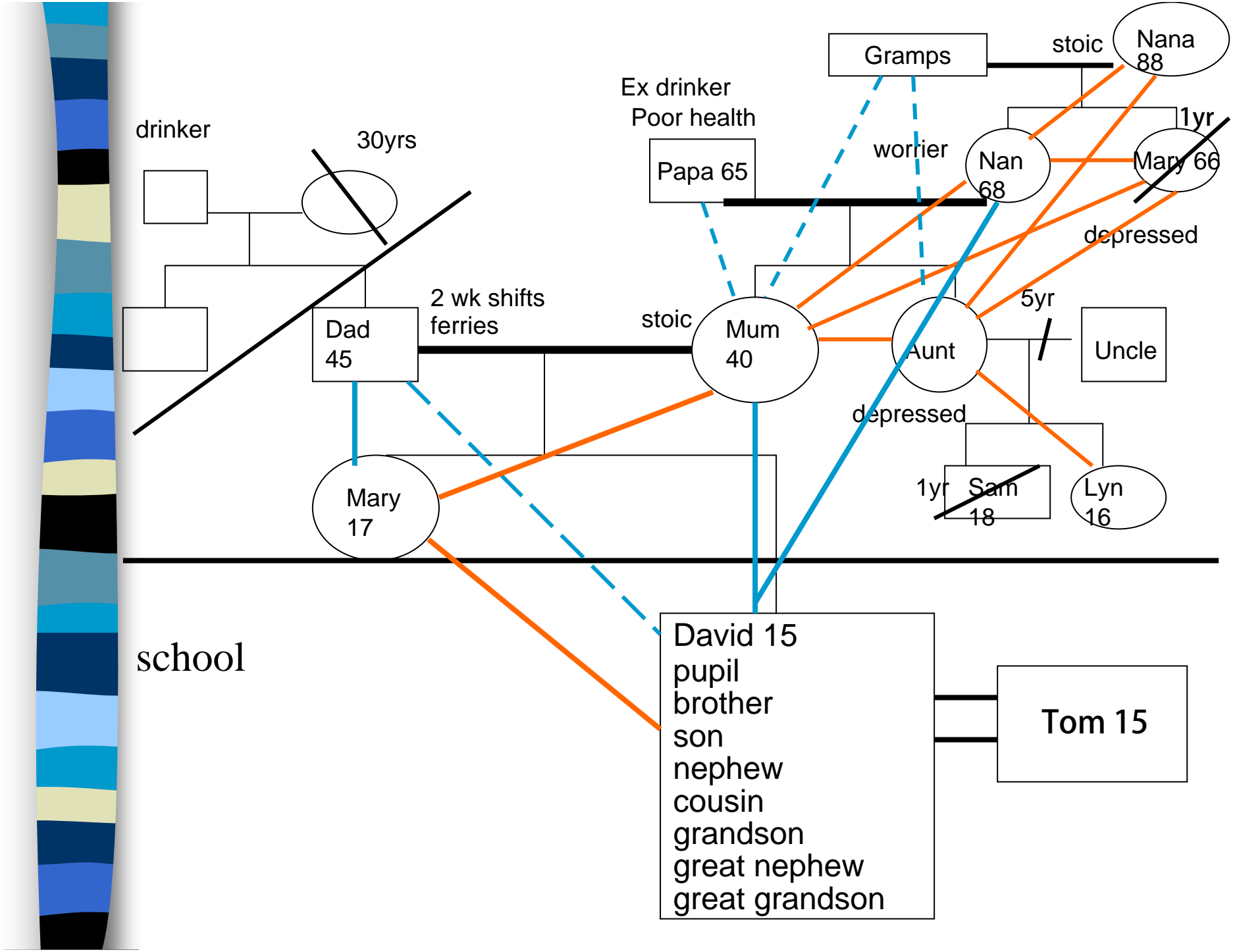


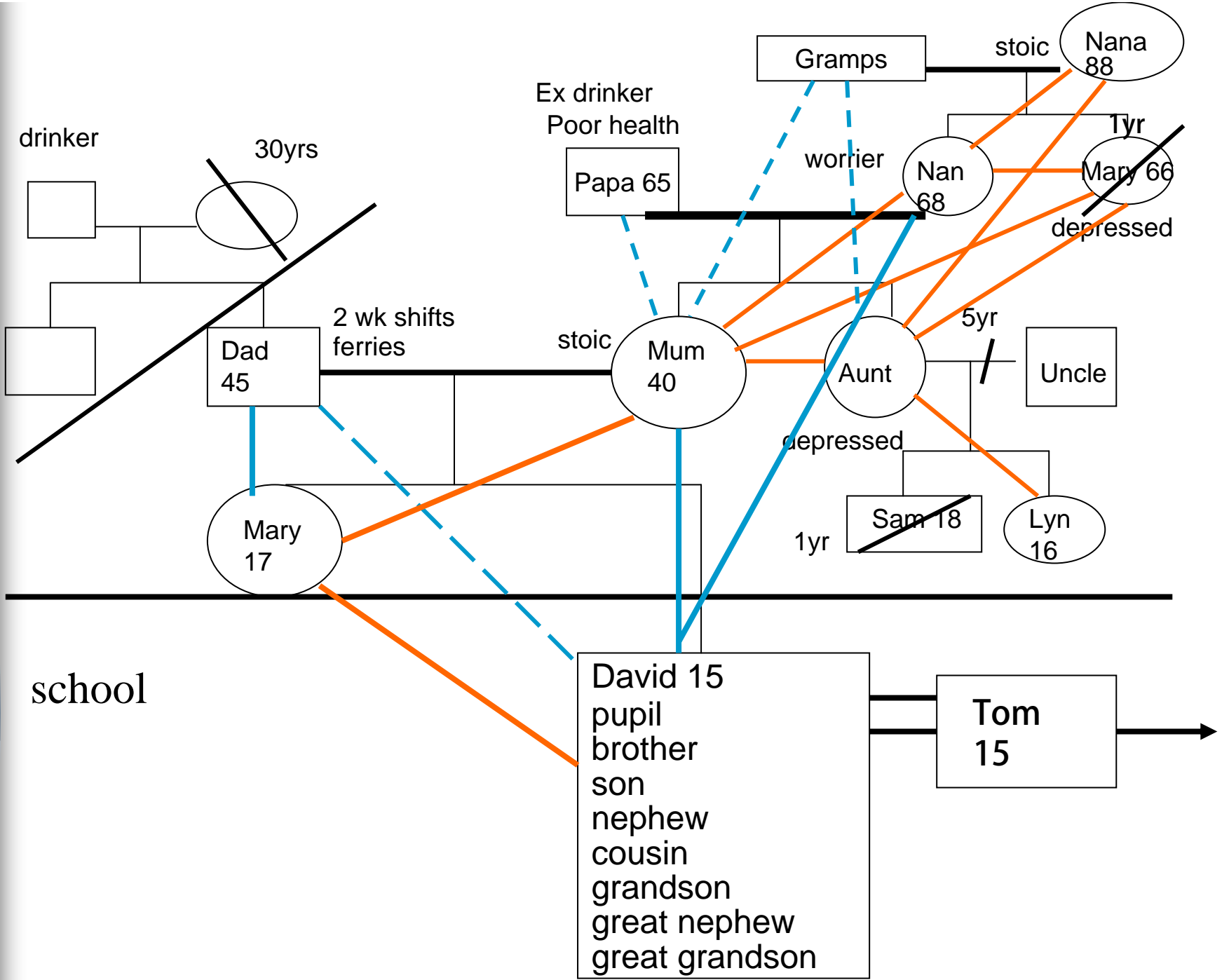
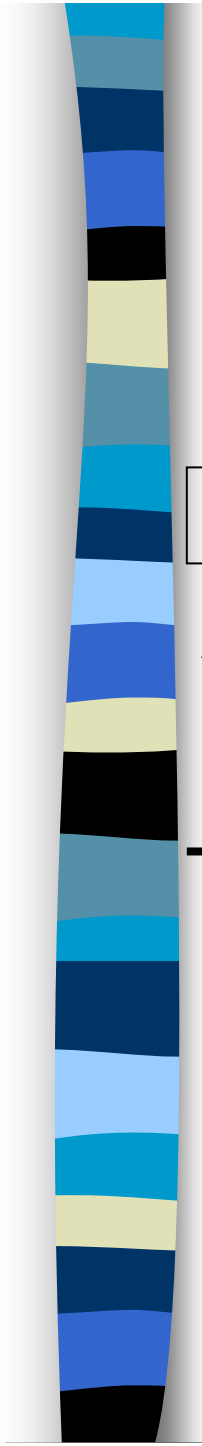
school

David 15
 pupil
 brother
 son
 nephew
 cousin
 grandson
 great nephew
 great grandson





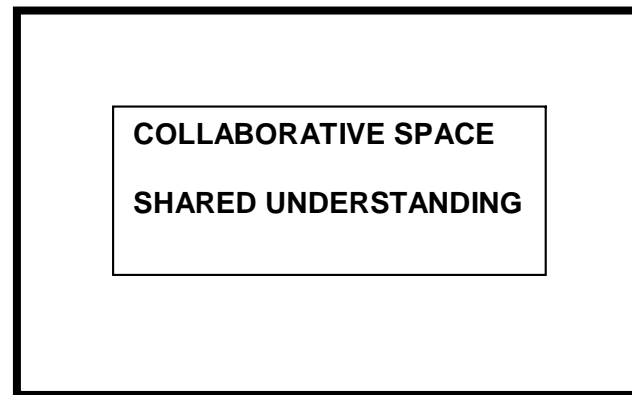
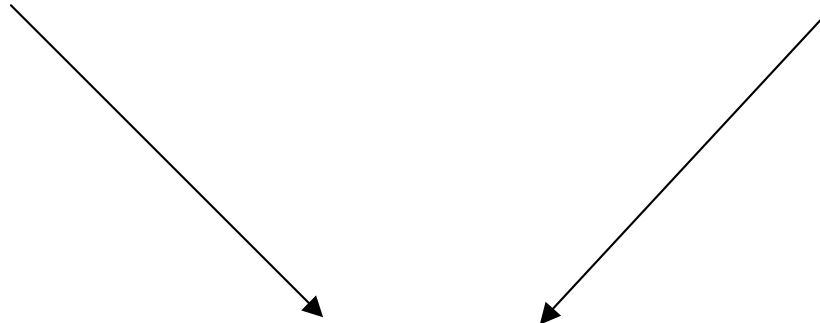




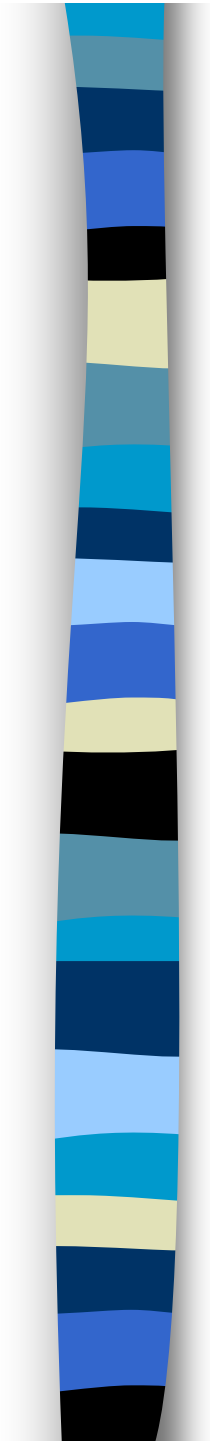
FAMILY BASED INTERVENTIONS

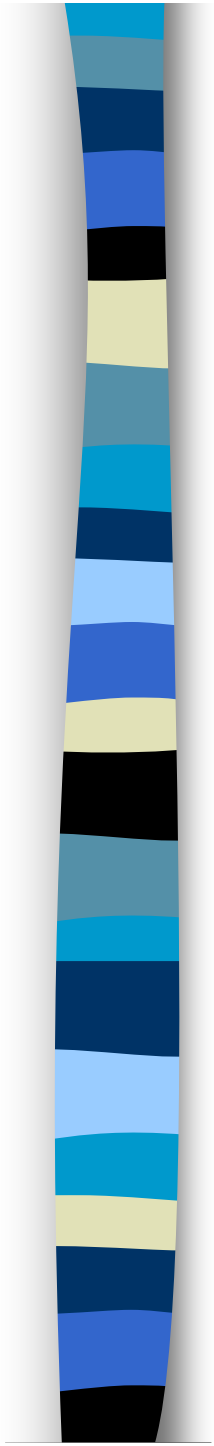
PROFESSIONAL
STANCE, KNOWLEDGE

THE INDIVIDUAL,
FAMILY, SYSTEM



Working relationship



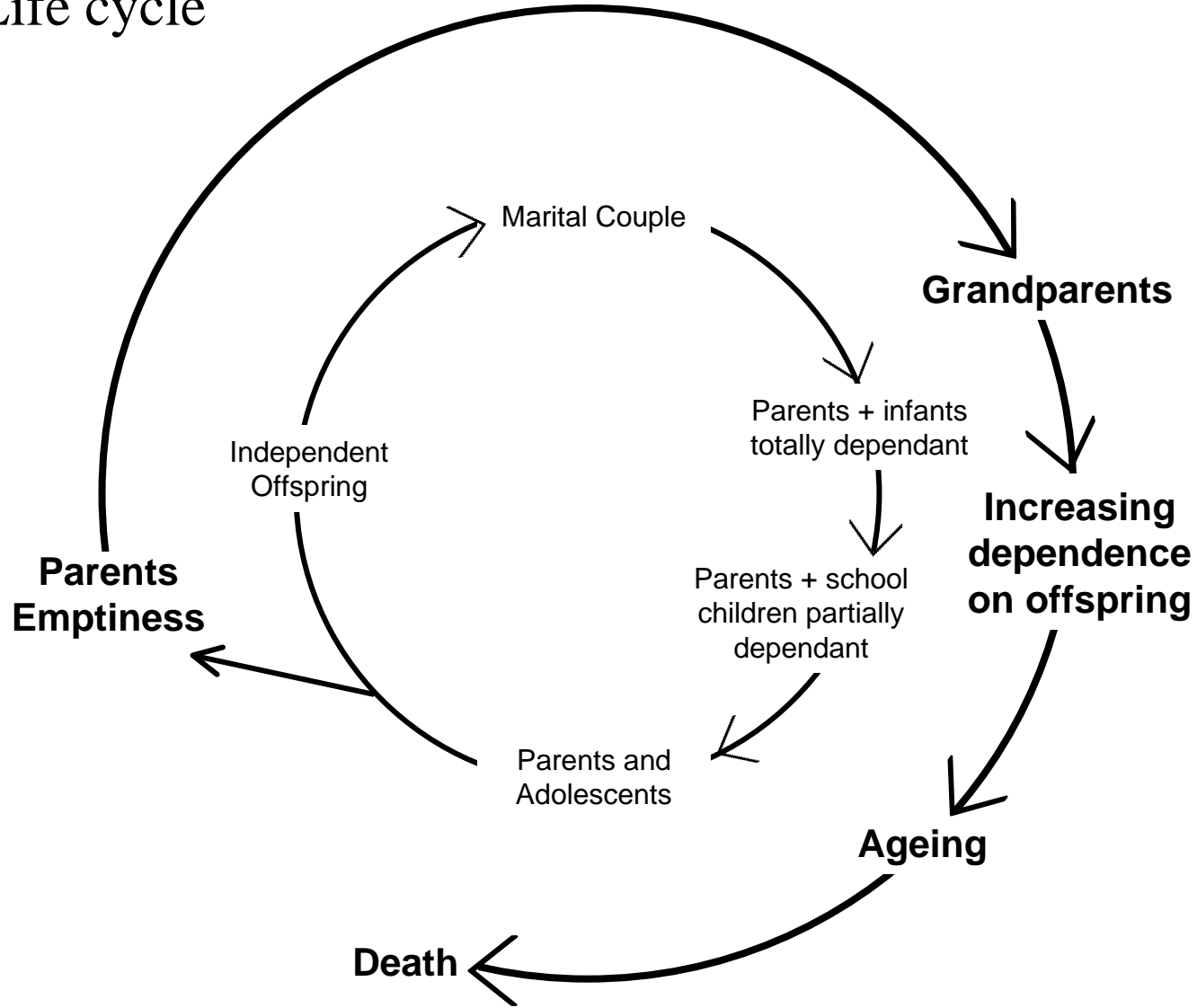




ENGAGEMENT AND CONTRACT FOR ASSESSMENT

- Clarifying expectations and reaching an agreement to work together
- Checking out understanding of referral route
- Outline what assessment involves
- Check who should be involved
- Give each present in the interview an opportunity to explain their views about participating in the assessment
- Clarify issues of confidentiality and professional responsibility.
- Manage challenges to engagement before proceeding with an assessment

Life cycle





SYSTEMIC THINKING AND PROFESSIONAL NETWORKS

$$M = \frac{K}{W \times P \times F \times C}$$

M = motivation for change or expressed competence of the family

K = the strengths of the family

W = the weight of the families case notes

P = the number of professionals involved

F = the number of failed appointments

C = the level of conflict , role confusion & poor communication in the professional network

(Hardwick 1991)